

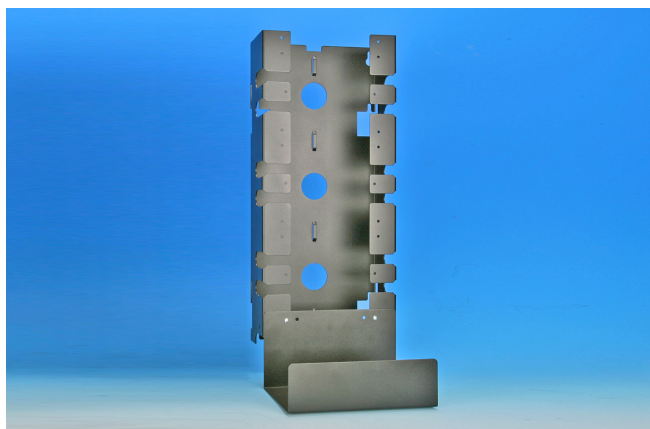
**110 Cross connect system is designed for 110 total solution. It considers both easy setting and wires management. The competitive setting cost and solid cable management structure will be the most economic cabling you can choose.**

**Features / Applications:**

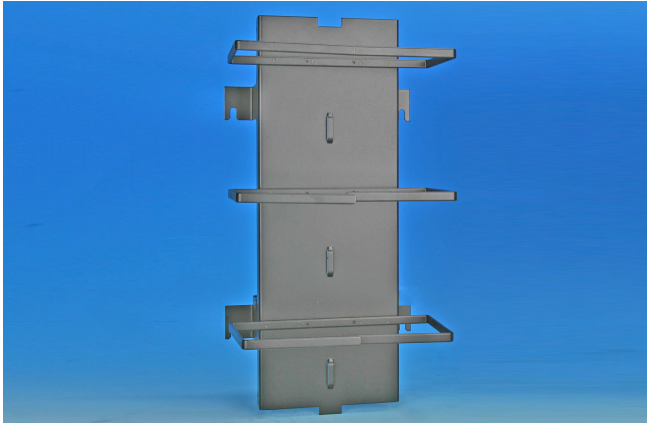
- 1. UL 1863 Safety Listed**
- 2. Separate purchase or system purchase are both available**
- 3. 16 gauge cold-rolled steel**
- 4. For 110 solution application**



<b>6210</b>		
<b>110 Basic cable management rack with bottom cable holder</b>		
<b>** Vertical cable management for 110 cables</b>		
<b>Ordering Information</b>		
<b>Item(s) / Polybag</b>	<b>Items/Inner box</b>	<b>Items/Outer box</b>
<b>1</b>		
<b>Color</b>	<b>Black</b>	



<b>6110</b>		
<b>110 Basic cross-connect rack with bottom cable holder</b>		
<b>** For 110 blocks' and 110 cable managements' setting</b>		
<b>Ordering Information</b>		
<b>Item(s) / Polybag</b>	<b>Items/Inner box</b>	<b>Items/Outer box</b>
<b>1</b>		
<b>Color</b>	<b>Black</b>	



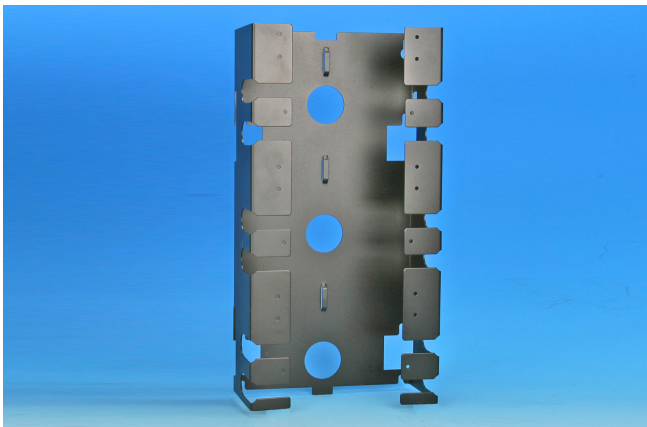
**6220**

**110 Extension cable management rack**

**\*\* Vertical cable management for 110 cables**

**Ordering Information**

Item(s) / Polybag	Items/Inner box	Items/Outer box
1		
Color	Black	



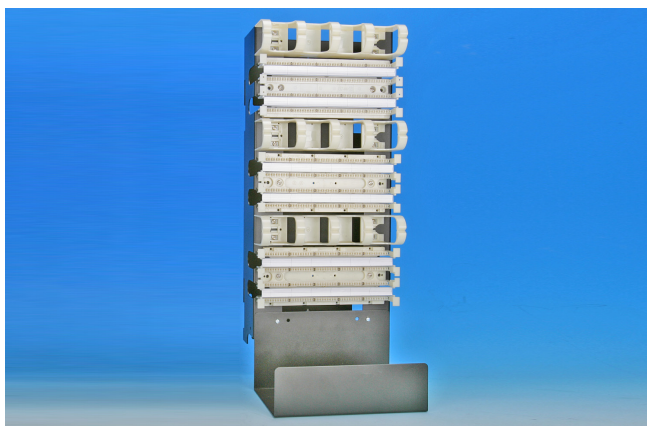
**6120**

**110 Extension cross-connect rack**

**\*\* For 110 blocks' and 110 cable managements' setting**

**Ordering Information**

Item(s) / Polybag	Items/Inner box	Items/Outer box
1		
Color	Black	



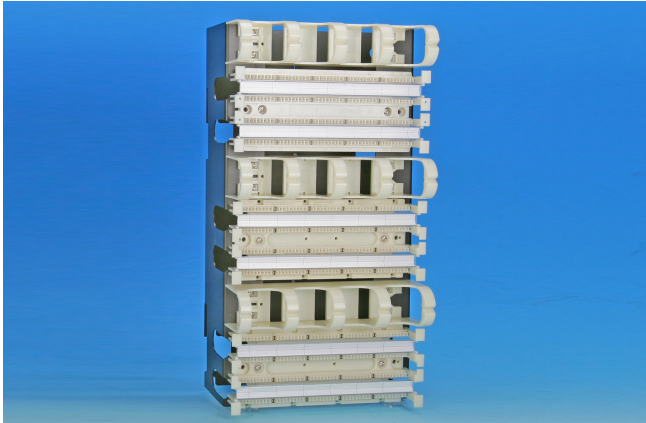
**6110-100**

**110 Basic cross-connect system with bottom cable holder**

**\*\*3 \* 110 100 pair blocks + 3 \* 110 cable management  
+ 1 \* 110 cross-connect rack**

**Ordering Information**

Item(s) / Polybag	Items/Inner box	Items/Outer box
1		
Color	Black	



**6120-100**

**110 Extension cross-connect system**

**\*\*3 \* 110 100 pair blocks + 3 \* 110 cable management  
+ 1 \* 110 cross-connect rack**

**Ordering Information**

Item(s) / Polybag	Items/Inner box	Items/Outer box
1		
Color	Black	