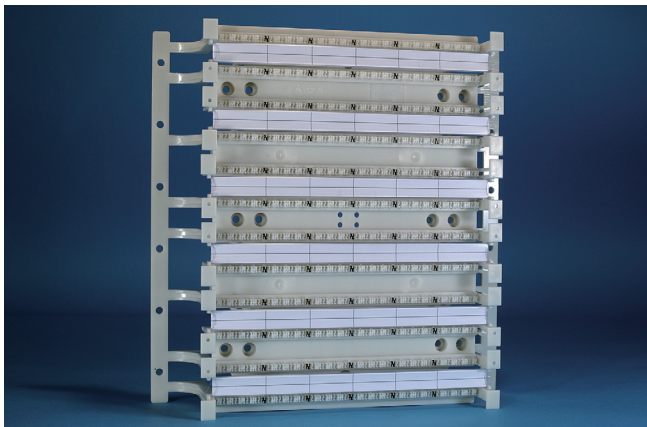


Surtec's Category 6 110-type blocks are designed to support voice and high speed data applications. 48, 96, 192 and 288 pair blocks are all available.

**Features / Applications:**

1. UL 1863 Safety Listed
2. UL94V-0 fire retardant plastic
3. Blocks with and without legs are available
4. Meets TIA/EIA-568.2-D Category 6 Connecting Hardware standards



**110BA6K-288**

Wiring block base 288 pair with legs

**\*\*For Cat.6 pair-pair IDC or patch cord use only**

**Ordering Information**

Item(s) / Polybag	Items/Inner box	Items/Outer box
1	1	10
Color	Customized colors available	



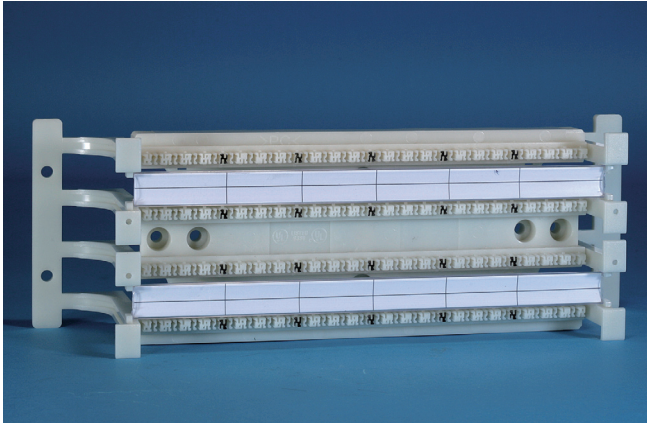
**110BA6-288**

Wiring block base 288 pair without legs

**\*\*For Cat.6 pair-pair IDC or patch cord use only**

**Ordering Information**

Item(s) / Polybag	Items/Inner box	Items/Outer box
1	1	10
Color	Customized colors available	



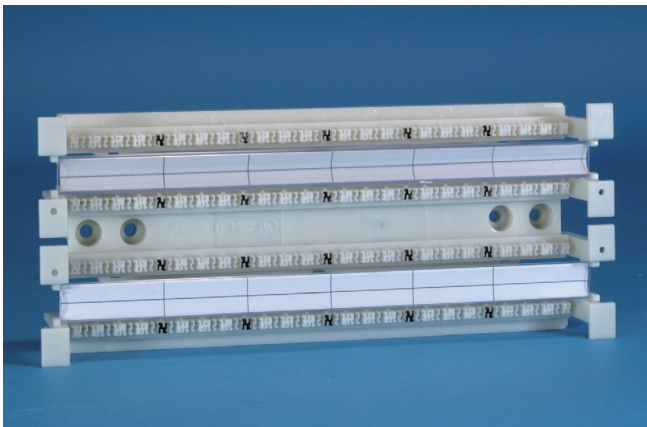
**110BA6K-96**

Wiring block base, 96 pair with legs

**\*\*For Cat.6 pair-pair IDC or patch cord use only**

**Ordering Information**

Item(s) / Polybag	Items/Inner box	Items/Outer box
1	3	30
Color	Customized colors available	



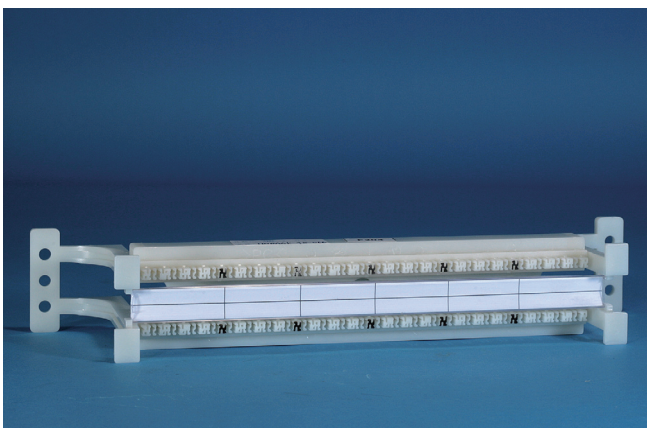
**110BA6-96**

Wiring block base, 96 pair without legs

**\*\*For Cat.6 pair-pair IDC or patch cord use only**

**Ordering Information**

Item(s) / Polybag	Items/Inner box	Items/Outer box
1	17	68
Color	Customized colors available	



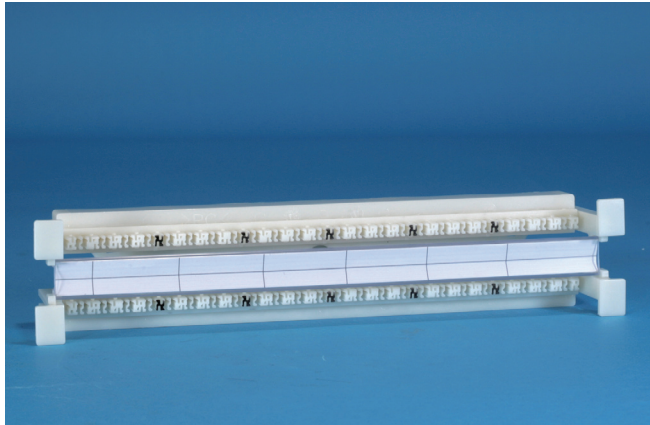
**110BA6K-48**

Wiring block base, 48 pair with Legs

**\*\*For Cat.6 pair-pair IDC or patch cord use only**

**Ordering Information**

Item(s) / Polybag	Items/Inner box	Items/Outer box
1	6	60
Color	Customized colors available	



## 110BA6-48

Wiring block base, 48 pair without legs

**\*\*For Cat.6 pair-pair IDC or patch cord use only**

### Ordering Information

Item(s) / Polybag	Items/Inner box	Items/Outer box
1	40	160
Color	Customized colors available	