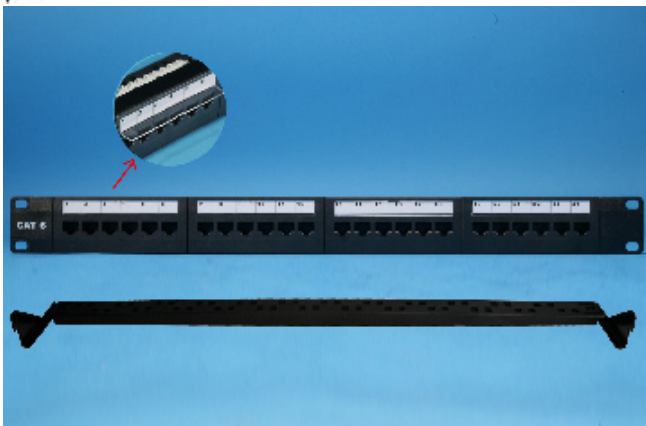
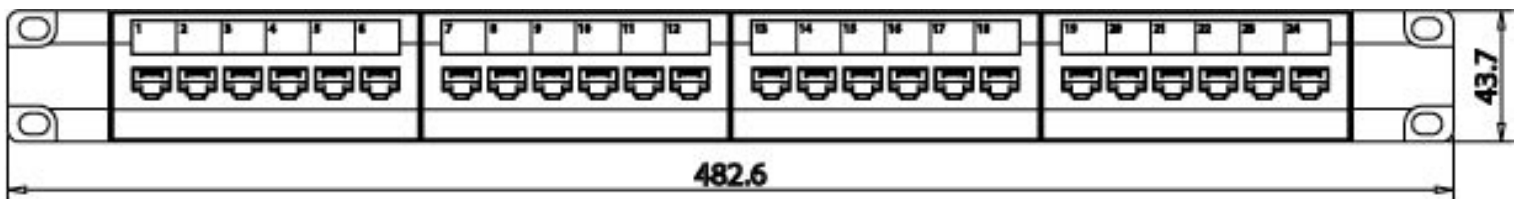


**SURTEC CAT 6 patch panel supports high bandwidth up to 250MHz and passes ANSI/TIA 568.2-D CAT 6 performance requirements.**

**Feature / Application:**

- 1. UL 1863 Safety Listed**
- 2. ANSI/TIA-568.2-D CAT 6 connecting hardware performance**
- 3. Hinged/Snapped style window with colored labels**
- 4. Front plastic cover (UL94V-0 plastic)**
- 5. Integrated cable management available (Optional)**
- 6. Projecting portion of IDC terminal can hold wires in its position before termination**
- 7. Wires can be terminated into IDC by 110 or Krone tool**
- 8. Compatible with SURTEC 110 patch cords**



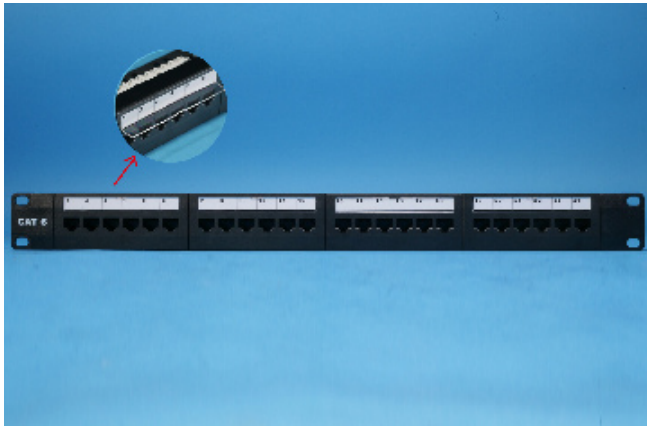
**2012P6-GMH24A**

**Cat.6 modular UTP 24 port patch panel, 1U**

**\*\*with cable management and hinged windows**

**Ordering Information**

Item(s) / Polybag	Items/Inner box	Items/Outer box
1	1	15
Color	Customized colors available	



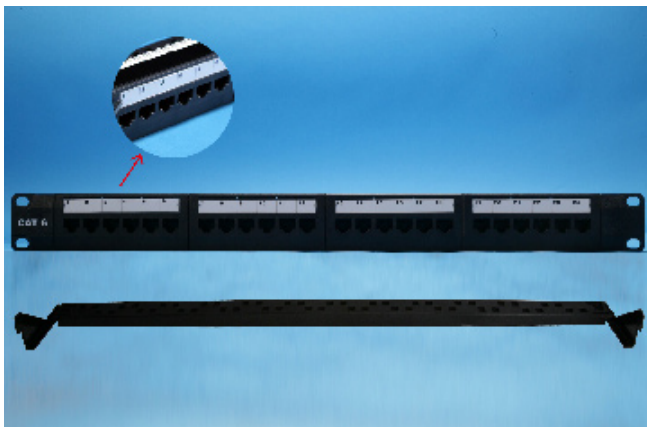
## 2012P6-GMH24E

Cat.6 modular UTP 24 port patch panel, 1U

\*\*without cable management, hinged windows

### Ordering Information

Item(s) / Polybag	Items/Inner box	Items/Outer box
1	1	15
Color	Customized colors available	



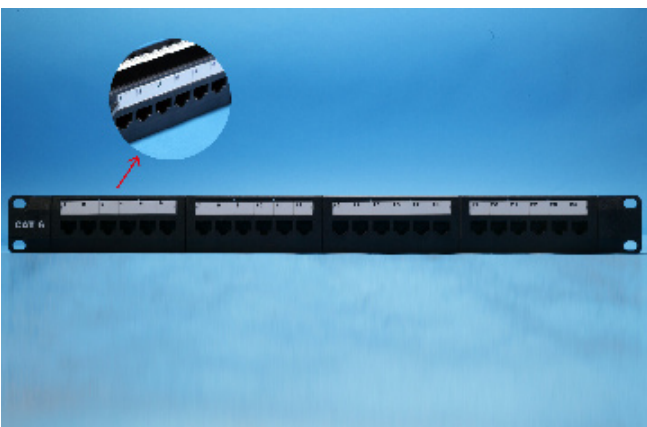
## 2012P6-GMH24B

Cat.6 modular UTP 24 port patch panel, 1U

\*\*with cable management and snap-in windows

### Ordering Information

Item(s) / Polybag	Items/Inner box	Items/Outer box
1	1	15
Color	Customized colors available	



## 2012P6-GMH24F

Cat.6 modular UTP 24 port patch panel, 1U

\*\*without cable management, snap-in windows

### Ordering Information

Item(s) / Polybag	Items/Inner box	Items/Outer box
1	1	15
Color	Customized colors available	



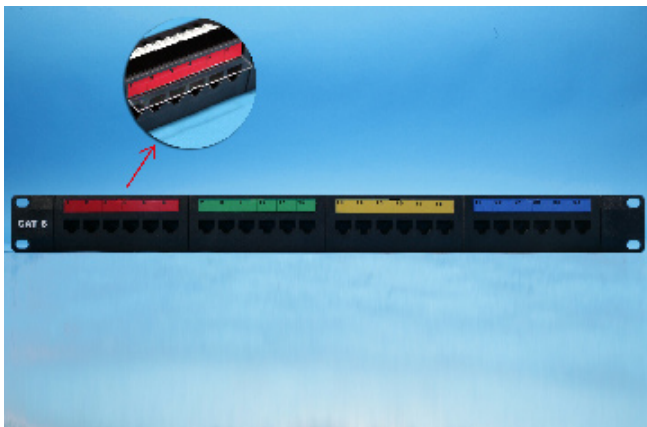
### 2012P6-GMH24C

Cat.6 modular UTP 24 port patch panel, 1U

**\*\*with cable management and hinged windows**

#### Ordering Information

Item(s) / Polybag	Items/Inner box	Items/Outer box
1	1	15
Color	Customized colors available	



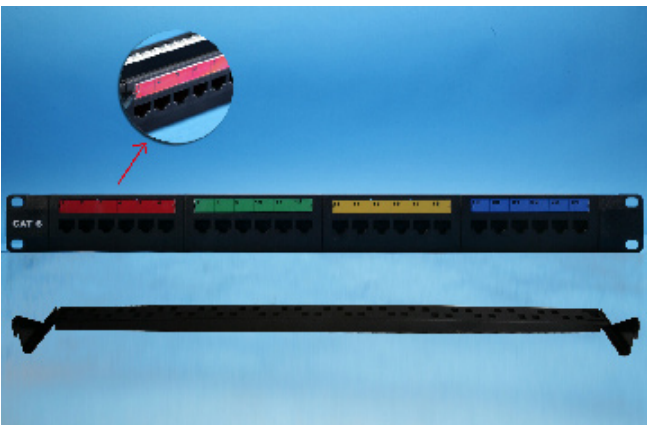
### 2012P6-GMH24G

Cat.6 modular UTP 24 port patch panel, 1U

**\*\*without cable management, hinged windows**

#### Ordering Information

Item(s) / Polybag	Items/Inner box	Items/Outer box
1	1	15
Color	Customized colors available	



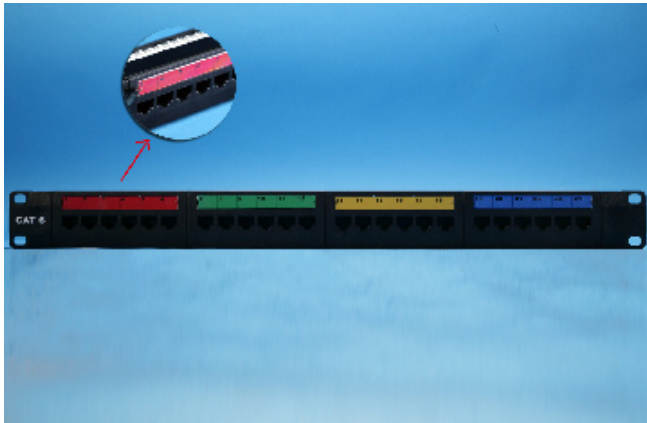
### 2012P6-GMH24D

Cat.6 modular UTP 24 port patch panel, 1U

**\*\*with cable management and snap-in windows**

#### Ordering Information

Item(s) / Polybag	Items/Inner box	Items/Outer box
1	1	15
Color	Customized colors available	



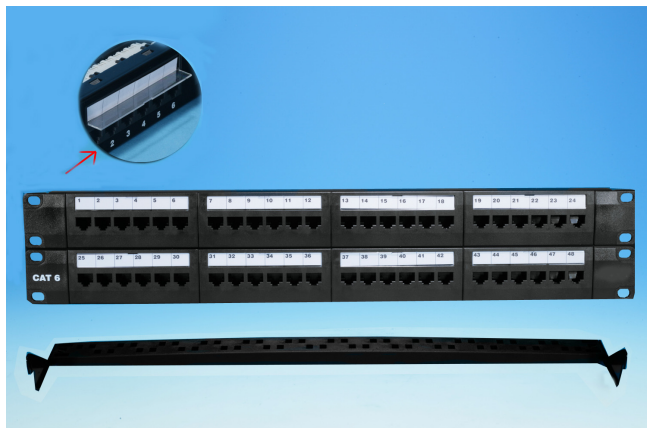
## 2012P6-GMH24H

Cat.6 modular UTP 24 port patch panel, 1U

\*\*without cable management, snap-in windows

### Ordering Information

Item(s) / Polybag	Items/Inner box	Items/Outer box
1	1	15
Color	Customized colors available	



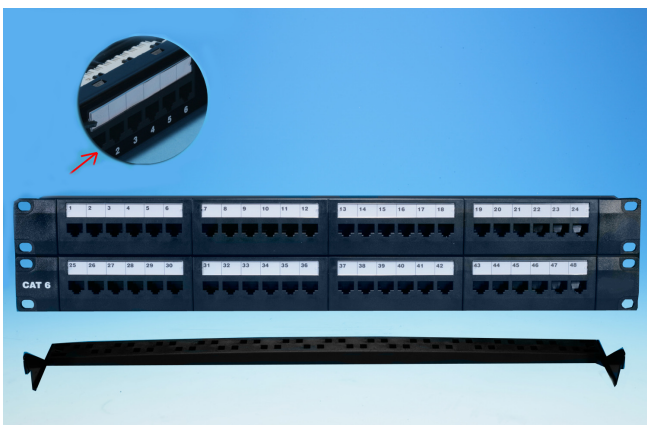
## 2012P6-GMH48A

Cat.6 modular UTP 48 port patch panel, 2U

\*\*with cable management and hinged windows

### Ordering Information

Item(s) / Polybag	Items/Inner box	Items/Outer box
1	1	10
Color	Customized colors available	



## 2012P6-GMH48B

Cat.6 modular UTP 48 port patch panel, 2U

\*\*with cable management and snap-in windows

### Ordering Information

Item(s) / Polybag	Items/Inner box	Items/Outer box
1	1	10
Color	Customized colors available	



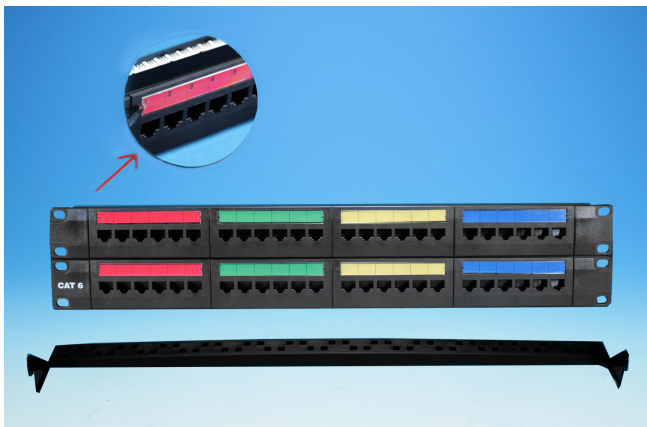
### 2012P6-GMH48C

Cat.6 modular UTP 48 port patch panel, 2U

\*\*with cable management and hinged windows

#### Ordering Information

Item(s) / Polybag	Items/Inner box	Items/Outer box
1	1	10
Color	Customized colors available	



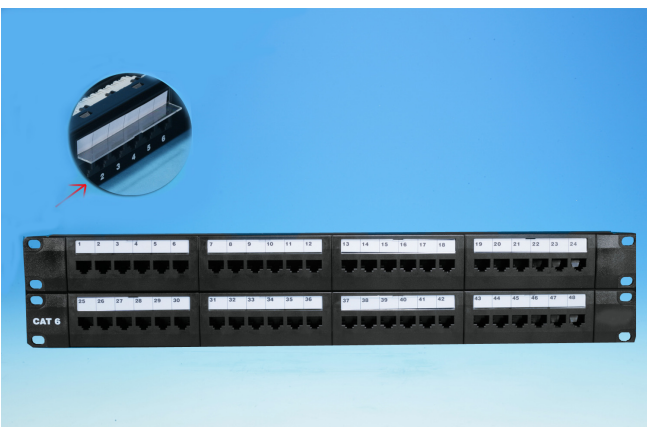
### 2012P6-GMH48D

Cat.6 modular UTP 48 port patch panel, 2U

\*\*with cable management and snap-in windows

#### Ordering Information

Item(s) / Polybag	Items/Inner box	Items/Outer box
1	1	10
Color	Customized colors available	



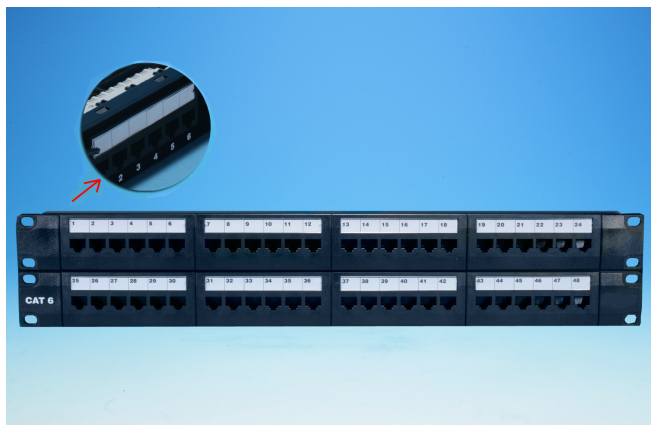
### 2012P6-GMH48E

Cat.6 modular UTP 48 port patch panel, 2U

\*\*without cable management, hinged windows

#### Ordering Information

Item(s) / Polybag	Items/Inner box	Items/Outer box
1	1	10
Color	Customized colors available	



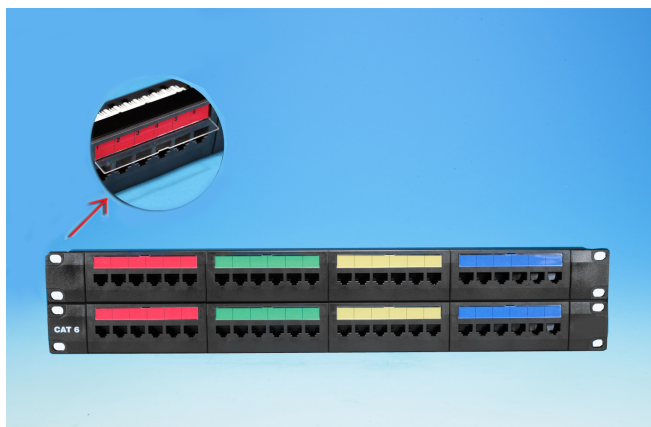
### 2012P6-GMH48F

Cat.6 modular UTP 48 port patch panel, 2U

\*\*without cable management, snap-in windows

#### Ordering Information

Item(s) / Polybag	Items/Inner box	Items/Outer box
1	1	10
Color	Customized colors available	



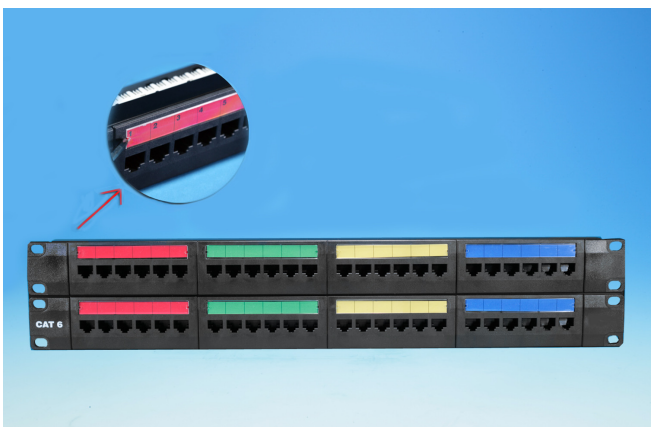
### 2012P6-GMH48G

Cat.6 modular UTP 48 port patch panel, 2U

\*\*without cable management, hinged windows

#### Ordering Information

Item(s) / Polybag	Items/Inner box	Items/Outer box
1	1	10
Color	Customized colors available	



### 2012P6-GMH48H

Cat.6 modular UTP 48 port patch panel, 2U

\*\*without cable management, snap-in windows

#### Ordering Information

Item(s) / Polybag	Items/Inner box	Items/Outer box
1	1	10
Color	Customized colors available	