

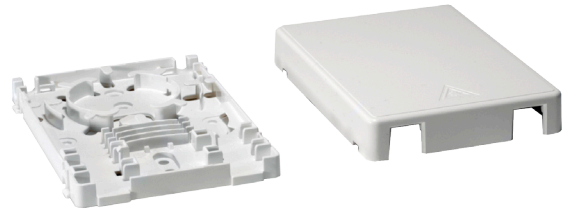
# FIBER 2-PORT TERMINAL BOX

## 1032G2

1032G2

### APPLICATION

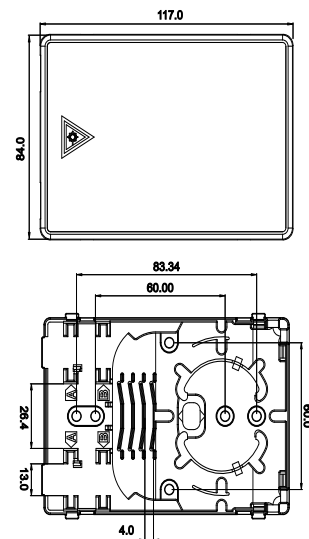
- 2-port terminal box
- Compatible with for LC or SC adapters
- Diameter of fiber loop is 40.0mm
- Cable entrance for cable diameters up to 5mm
- Knout-out for cable entrance that cable can pass through the back side



### FEATURES

- Pitch of screw holes allows use of US or EU back box
- 4 locations with mechanical splice tray (Dimension range of mechanical splice: 3-4mm(W) x 30-40mm(H) x 7mm(D))
- The fiber adapters supporters have been designed for 3-degree downward, that can ensure the safety, protect people's eyes don't be hurt by the optical light

### Mechanical Drawing



### STANDARDS

- UL 1863 safety listed
- UL 94V-0 flammability standard

### PHYSICAL SPECIFICATIONS

- Dimensions:  
84.0mm(W) x 117.0mm(H) x 18.0mm(D)
- Materials:  
ABS plastic



### SURTEC INDUSTRIES INC.

No.9, Kon Jan North Road, Liutu Industrial Zone, Keelung City, Taiwan

Tel:+886-2-2451-8888

Fax:+886-2-2452-1111

E-mail:surtec@surtec.com.tw

Web:www.surtec.com.tw