

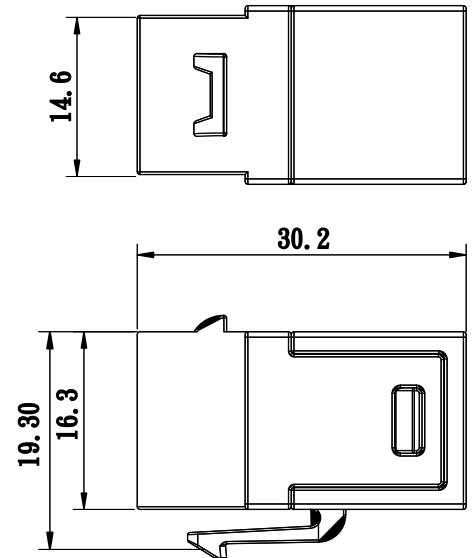
**SURTEC's 1026KSD-MA1 CAT 6A FTP 180° female to female inline coupler is designed for easy installation in the SURTEC EZNEXT patching system. Compatible with SURTEC faceplates and snap-in patch panels.**

**Feature :**

- 1. CAT 6A FTP 180° female to female inline coupler**
- 2. Passes CAT 6A channel performance (ISO/IEC 11801)**
- 3. UL 1863 safety listed**
- 4. For consolidation points and cross-connections**
- 5. No termination required; feed-through on the front and rear**
- 6. 360° shielded housing**

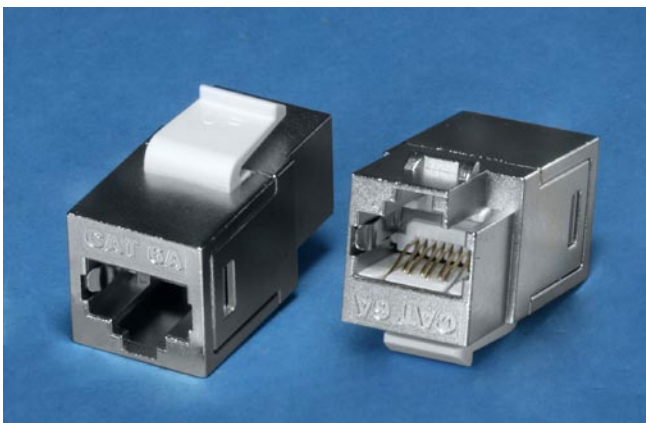
**Application :**

- 1. For Ethernet CAT 6A FTP solutions**
- 2. Compatible with SURTEC FTP patch panel and FTP faceplate**
- 3. Compatible with SURTEC EZNEXT patching system**



**ISO/IEC 11801 Channel Performance Requirements**

<b>CAT 6A</b>	<b>Bandwidth</b>	<b>NEXT</b>	<b>ELFEXT</b>	<b>Attenuation</b>	<b>Return Loss</b>
<b>1026KSD-MA1</b>	<b>(dB) at 500MHZ</b>	<b>&gt;37</b>	<b>&gt;29.1</b>	<b>&lt;0.45</b>	<b>&gt;14</b>



**1026KSD-MA1**

**CAT 6A FTP inline coupler**

**\*\*CAT 5e & CAT 6 jack available**

**Ordering Information**

<b>Item(s) / Polybag</b>	<b>Items/Inner box</b>	<b>Items/Outer box</b>
<b>1</b>	<b>100</b>	<b>800</b>
<b>Color</b>	<b>Zinc-alloy</b>	