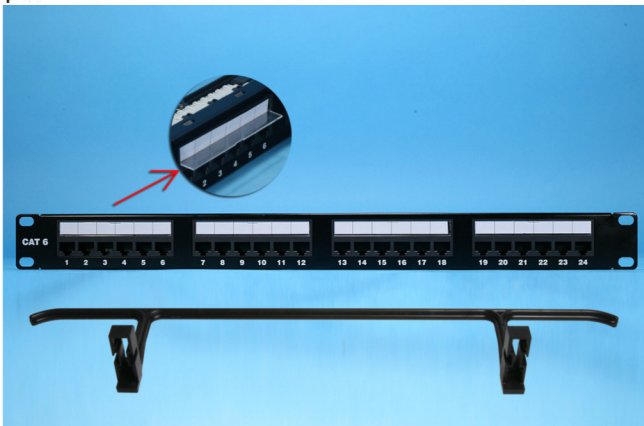
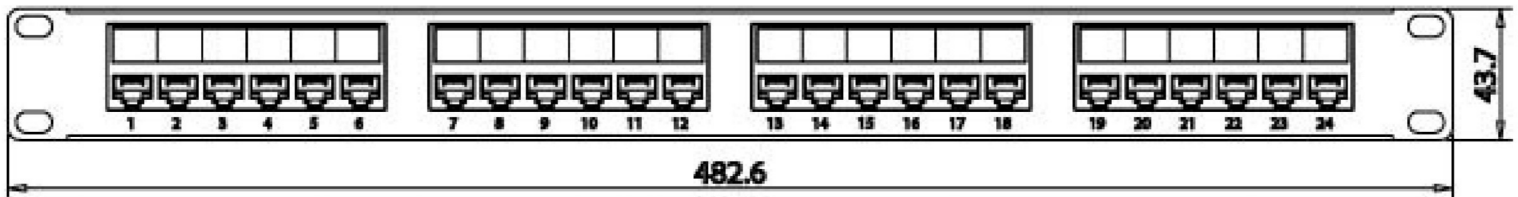
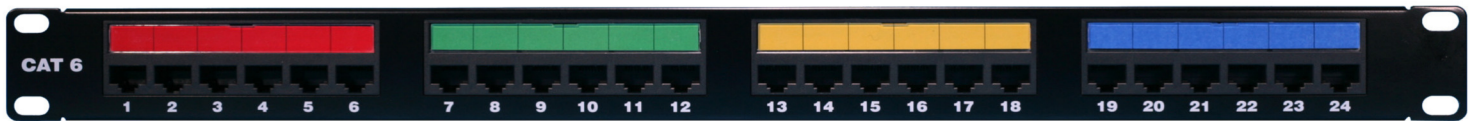
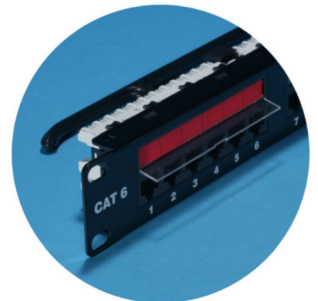


SURTEC CAT 6 patch panel has standard-surpassed transmission performance . It supports high bandwidth up to 250MHz and compatible with CAT 6 component performance.

Feature / Application:

- 1. CAT 6 UTP patch panel**
- 2. UL 1863 safety listed**
- 3. Compatible with CAT 6 component performance (ANSI/TIA-568.2-D)**
- 4. window hinged/snapped style with colored**
- 5. Printed port number for identification**
- 6. Integrated cable management bar (Optional)**
- 7. Projecting portion of IDC terminal can hold wires in its position before termination**
- 8. Wires can be terminated into IDC by 110 or Krone tool**
- 9. Compatible with SURTEC 110 patch cords**
- 9. Compatible with SURTEC IDC termination cap**



2012P6-FMH24A

CAT 6 UTP 24 port patch panel, 1U

****with cable management and hinged windows**

Ordering Information

Item(s) / Polybag	Items/Inner box	Items/Outer box
1	1	15
Color	Customized colors available	