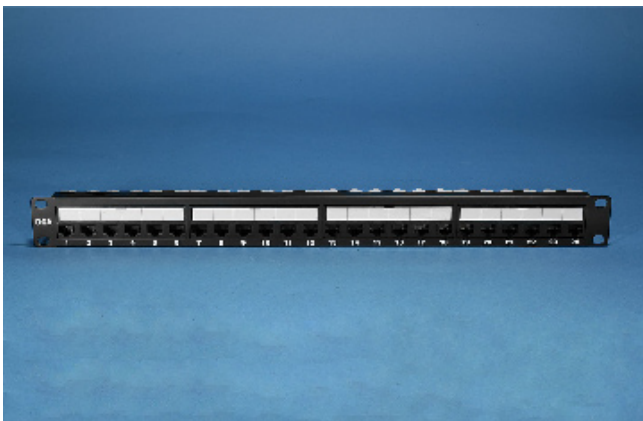
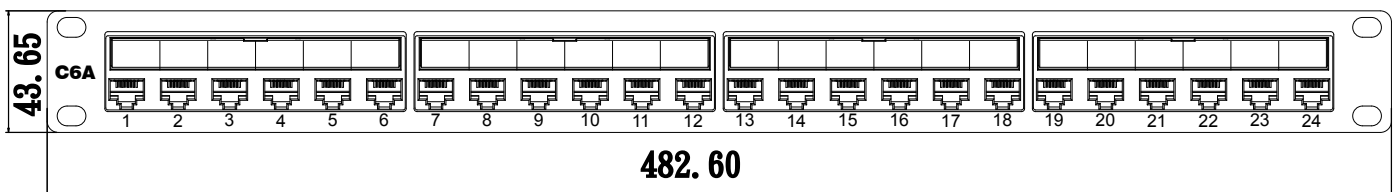


SURTEC's 2012P6A-VM24 and 2012P6A-VM48 CAT 6A patch panels support high bandwidth - up to 500MHz - and passe ANSI/TIA-568.2-D.

Feature / Application:

- 1. UL 1863 safety listed**
- 2. Compatible with ANSI/TIA-5682-D CAT 6A component performance**
- 3. Hinged label holder for easy label changes**
- 4. UL 94V-0 fire retardant plastic**
- 5. Each 6-Port based module is replaceable**
- 6. The projecting portion of the IDC terminal holds the wires in position before termination**
- 7. IDC's easily terminated by 110 or Krone tool**



2012P6A-VM24		
CAT 6A UTP 24-port patch panel		
**2U 48-port available		
Ordering Information		
Item(s) / Polybag	Items/Inner box	Items/Outer box
1	1	15
Color	Customized colors available	



2012P6-VM48

CAT 6A UTP 48-port patch panel

****1U 24-port available**

Ordering Information

Item(s) / Polybag	Items/Inner box	Items/Outer box
1	1	10
Color	Customized colors are available	