

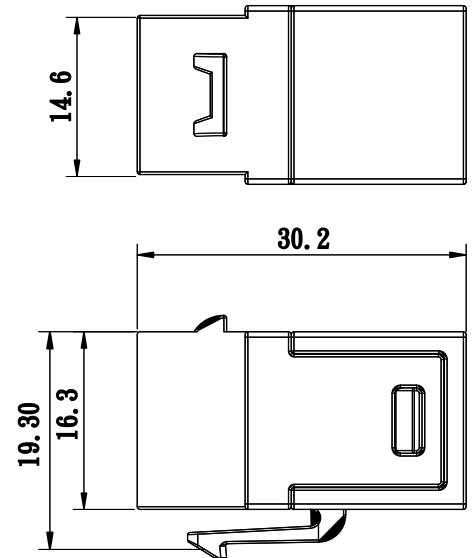
**SURTEC's 1026KS-M5R CAT 5e FTP 90° female to female inline coupler is great for extending, shortening or repairing a channel in the field. It supports CAT 5e channel performance. The 1026KS-M5R provides flexibility to your CAT 5e FTP channel installation.**

**Feature :**

- 1. CAT 5e FTP 90° female to female inline coupler**
- 2. Passes CAT 5e channel performance (ANSI/TIA-568.2-D)**
- 3. UL 1863 safety listed**
- 4. For consolidation points and cross-connections**
- 5. 360° shielded housing**

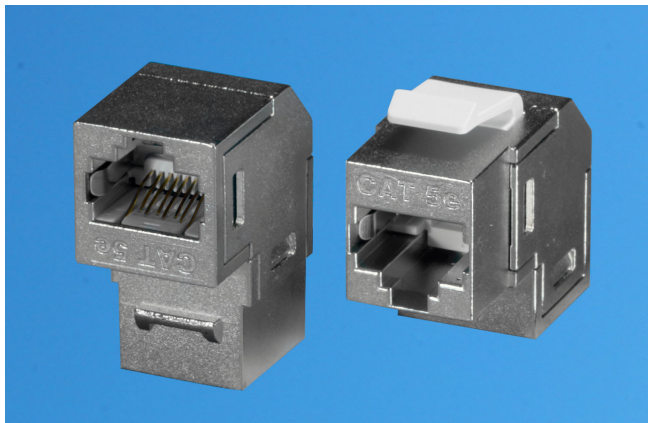
**Application :**

- 1. For Ethernet CAT 5e FTP Solutions**
- 2. Compatible with SURTEC faceplates and snap-in patch panels**



**ANSI/TIA-568.2-D Channel Performance Requirements**

<b>CAT 5e</b>	<b>Bandwidth</b>	<b>NEXT</b>	<b>ACFR</b>	<b>Attenuation</b>	<b>Return Loss</b>
<b>1026KS-M5R</b>	<b>(dB) at 100MHZ</b>	<b>&gt;30.1</b>	<b>&gt;17.4</b>	<b>&lt;24.0</b>	<b>&gt;10.0</b>



**1026KS-M5R**

**CAT 5e FTP 90° degree inline coupler**

**\*\*CAT 6 and CAT 6A coupler available**

**Ordering Information**

<b>Item(s) / Polybag</b>	<b>Items/Inner box</b>	<b>Items/Outer box</b>
<b>1</b>	<b>800</b>	<b>800</b>
<b>Color</b>	<b>Zinc-alloy</b>	