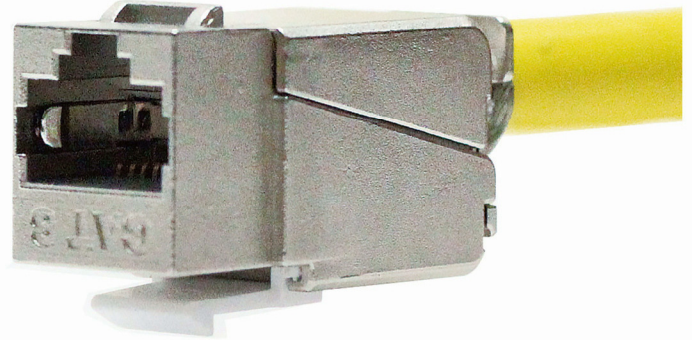


# CAT 8

Our category 8 cabling infrastructure system has been designed to support 25GBase-T or 40GBase-T transmission. The Category 8 system has been tested and the testing confirmed that it meets the latest Category 8 ISO standard (configuration: 2m+26m+2m & 1m+5m+1m Channel) and it is also backward compatible with Category 6A and 5e systems.

## Our Category 8 Solution Features:

1. Delta verified CAT 8 Channel Class I performance.
2. Designs support toolless termination.
3. Our 360°-shield housing provides secure data transmission.
4. High quality die-cast housing.



## 1001B-I8 Field Terminable Plug

- Insulation Displacement Contacts for solid/stranded wire from 22 to 26 AWG provide a secure connection.
- Long released latch ensures easy insertion and removal in limited space.
- Narrow profile supports high-density applications.
- Patented compensation method in a multilayered printed circuit board provides excellent performance.

## 2013C-T8F Shielded Toolless Jack

- A multilayered printed circuit board enhances quality and reliability of system.
- The unique patented contactor-design ensures reliable performance.
- Our 360°-shield housing provides EMI & RFI protection and prevents alien crosstalk.
- The design of two layered cable manager provides installer faster and more convenient termination.

## DELTA CATEGORY 8 CERTIFICATE & FLUKE DSX-8000 CATEGORY 8 TEST RESULT

### Compliance Statement

Screened Channel, Class I

Company: Surtec Industries Inc.  
No. 9 Gongqian N. Rd., C&C, Keelung City 99007, Taiwan R.O.C.

Channel Identification (2 connector model)  
Horizontal cable: Drake UC Future C22 Cat.8.2 Solid Cable

Condit: Drake UC Future C22 Cat.8.2 Solid  
• equipped with Surtec Cat.8 Field Termination Plug, Part no. 1001B-I8

Connecting hardware for interconnect/equipment outlet: Surtec Cat.8 Keystone Jacks Part no. 2013C-T8F

Channel test configurations (cord/horizontal cable/cord):  
Long channel: 2 m / 26 m / 2 m  
Short channel: 1 m / 5 m / 1 m

Generic cabling standards - Class I Channel requirements:  
• ISO/IEC 11801-1:2017 (Ed. 1.0) / ISO/IEC 11801-5:2017 (Ed. 1.0)  
• ANSI/TIA-568-C-2-1:2016

Technical report: TSUNGO PLUG2  
7/29/2018, DANAN:1312005

Force Technology product ID: 6673

CS valid until: 1 July 2019

This product has been tested by FORCE Technology up and complies with the electrical requirements of the above specified standards and Terms and conditions for the EC 180078D programme for Generic and Casual Cabling, 100212006. The product takes part in a maintenance of certification schedule, which implies that FORCE Technology performs a sample test of the product once a year.

Hørsholm, 17 May 2018

Lars Lindorff Pedersen  
Test Manager

Dennis Andersen  
Head of Department

FORCE Technology  
Impressvej 4  
2009 Hørsholm  
Tel: +45 43 21 18 00  
info@force-technology.com

No. 2018-374

Operator: SURTEC  
Software Version: V5.5 Build 2  
Limits Version: V8.3  
Calibration Start Date: Main (Module) 12/04/2017  
Remote (Module): 12/04/2017

Model: DSX-8000  
Main SN: 1720059  
Remote SN: 1720049  
Main Adapter: DSX-CHA804  
Remote Adapter: DSX-CHA804

Test Summary: PASS

### LINKWARE PC

Cable ID: C8 ISO CH 1m+5m+1m DRA.

Date / Time: 12/04/2018 01:53:16 PM  
Headroom: 1.6 dB (NEXT 36.4)

Test Limit: ISO1801 Channel Class I (+All)  
Cable Type: Cat 8 S/FTP  
NVP: 74.0%

Operator: SURTEC  
Software Version: V5.5 Build 2  
Limits Version: V8.3  
Calibration Start Date: Main (Module) 12/04/2017  
Remote (Module): 12/04/2017

Model: DSX-8000  
Main SN: 1720059  
Remote SN: 1720049  
Main Adapter: DSX-CHA804  
Remote Adapter: DSX-CHA804

Test Summary: PASS

Length (m) [Pair 36] 8.0

Prop. Delay (ns) [Limit 169] [Pair 36] 36

Delay skew (ns) [Limit 16] [Pair 36] 0

Resistance (ohms) [Limit 6.40] [Pair 36] 1.16

Resist. Unbal. (ohms) [Limit 0.200] [Pair 36] 0.017

Return Loss (dB) [Pair 36] 28.2

Insertion Loss (dB) [Pair 36] 20.4

Frequency (MHz) [Pair 36] 1554.0

Worst Case Margin [Pair 36] 28.2

Worst Pair [Pair 36] 36

PS NEXT (dB) [Pair 36] 2.1

PS ACR-F (dB) [Pair 36] 8.9

PS ACR-N (dB) [Pair 36] 8.9

PS RL (dB) [Pair 36] 12

Worst Pair [Pair 36] 36

RL (dB) [Pair 36] 12

Frequency (MHz) [Pair 36] 888.0

Limit (dB) [Pair 36] 6.5

8.0 m

Wire Map (T568B)

Insertion Loss (dB)

Worst Case Margin

PS NEXT (dB)

PS ACR-F (dB)

PS ACR-N (dB)

PS RL (dB)

RL (dB)

### LINKWARE PC

Cable ID: C8 ISO CH 1m+5m+1m DRA.

Date / Time: 12/04/2018 01:53:16 PM  
Headroom: 1.6 dB (NEXT 36.4)

Test Limit: ISO1801 Channel Class I (+All)  
Cable Type: Cat 8 S/FTP  
NVP: 74.0%

Operator: SURTEC  
Software Version: V5.5 Build 2  
Limits Version: V8.3  
Calibration Start Date: Main (Module) 12/04/2017  
Remote (Module): 12/04/2017

Model: DSX-8000  
Main SN: 1720059  
Remote SN: 1720049  
Main Adapter: DSX-CHA804  
Remote Adapter: DSX-CHA804

Test Summary: PASS

Worst Case Margin [Pair 36] 14.0

Worst Pair [Pair 36] 36

TCL (dB) [Pair 36] 16.2

CONEXT (dB) [Pair 36] 10.1

CMRL (dB) [Pair 36] 10.1

PS NEXT (dB) [Pair 36] 2.1

PS ACR-F (dB) [Pair 36] 8.9

PS ACR-N (dB) [Pair 36] 8.9

PS RL (dB) [Pair 36] 12

Worst Pair [Pair 36] 36

RL (dB) [Pair 36] 12

Frequency (MHz) [Pair 36] 1552.0

Limit (dB) [Pair 36] 3.0

Worst Case Margin

Worst Pair

TCL (dB)

CONEXT (dB)

CMRL (dB)

PS NEXT (dB)

PS ACR-F (dB)

PS ACR-N (dB)

PS RL (dB)

RL (dB)