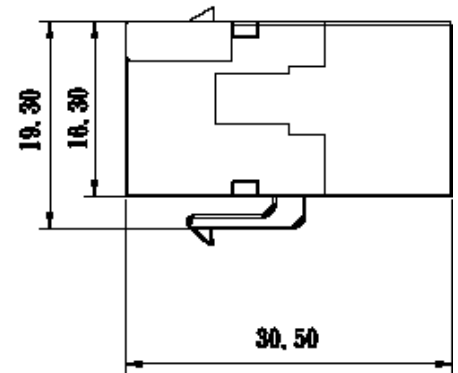
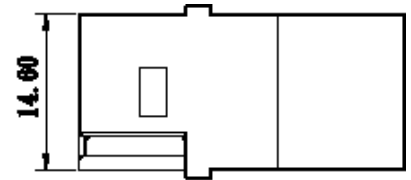


SURTEC's 1026KD-MAC CAT 6A UTP 180° female to female inline coupler is designed for easy installation in the SURTEC EZNEXT patching system. Compatible with SURTEC faceplates and snap-in patch panels.

Feature :

1. CAT 6A UTP 180° female to female inline coupler
2. Passes CAT 6A channel performance (ANSI/TIA-568.2-D)
3. UL 1863 safety listed
4. For consolidation points and cross-connections
5. No termination required; feed-through on the front and rear

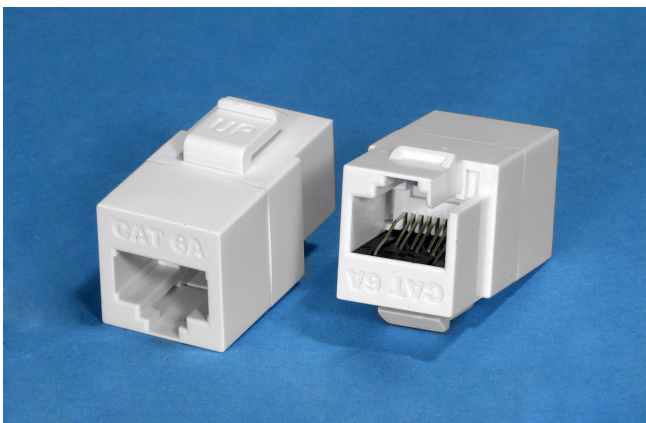


Application :

1. For Ethernet CAT 6A UTP solutions
2. Compatible with SURTEC UTP patch panel and UTP faceplate
3. Compatible with SURTEC EZNEXT patching system

ANSI/TIA-568.2-D Channel Performance Requirements

CAT 6A	Bandwidth	NEXT	ELFEXT	Attenuation	Return Loss
1026KD-MAC	(dB) at 500MHZ	>37	>29.1	<0.45	>14



1026KD-MAC

CAT 6A UTP inline coupler

**CAT 5e & CAT 6 jack available

Ordering Information

Item(s) / Polybag	Items/Inner box	Items/Outer box
1	100	1000
Color	Customized colors available	