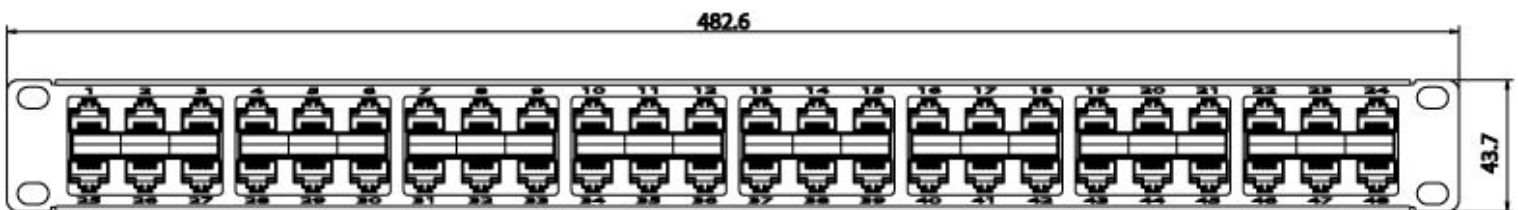
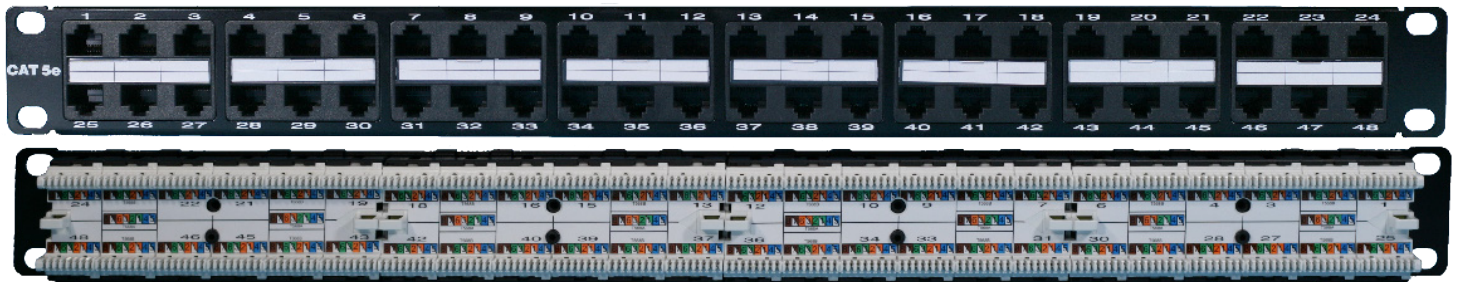


Unlike traditional 2U48Port panels, Surtec's new 48Port High density PCB patch panel helps save your valuable rack space and optimizes the space usage in data centers by occupying only 1U of rack space. The unique design allows for easy punch down termination with both 110 and Krone tool. Integrated cable management bar keeps cables in order and easy to route.

Features / Applications:

1. 1U48Port configuration
2. UL 1863 Safety Listed
3. ANSI/TIA-568.2-D Cat.5e Connecting Hardware Performance Guaranteed
4. Pre-printed port numbers for identification
5. Exchangeable identification labels
6. Integrated cable management bar
7. Projecting portion of IDC terminal can hold wires in its position before termination



2012P5E-J48		
CAT.5e 1U48Port-type Patch Panel		
**Window Label + Cable Management		
Ordering Information		
Item(s) / Polybag	Items/Inner box	Items/Outer box
1	15	15
Color	Customized colors available	