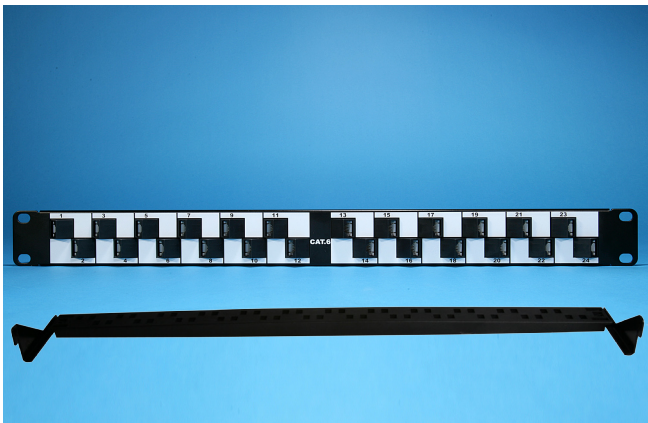
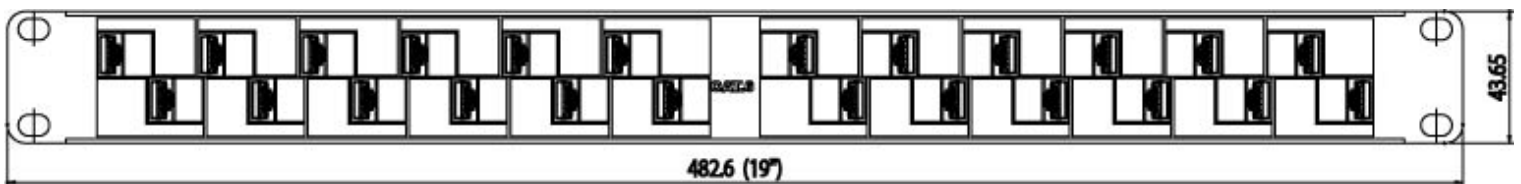
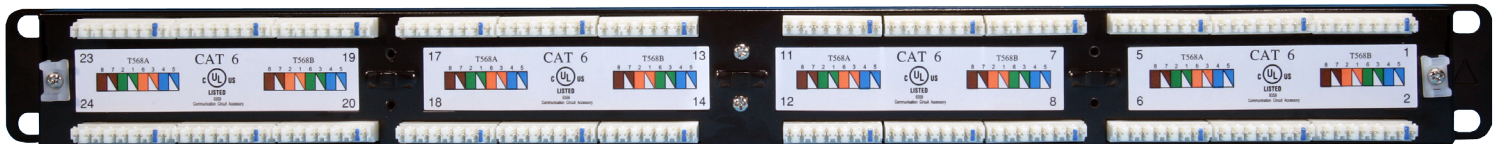
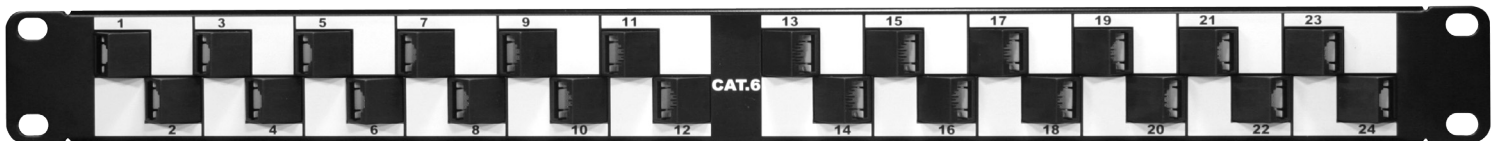


SURTEC's 2012PA6-MH24A CAT 6 Angled Patch Panel is designed for supporting more convenient and efficient patch cord management. Without horizontal cable managements needed, the patch cords at the front side and cables at the rear side can be easily guided into the vertical racks.

Feature / Application:

- 1. CAT 6 UTP staggered angled patch panel**
- 2. UL 1863 safety listed**
- 3. Compatible with CAT 6 component performance (ANSI/TIA-568.2-D)**
- 4. IDC design for 110 / Krone punch down tool**
- 5. Projecting portion of IDC terminal can hold wires in its postioion before termination**



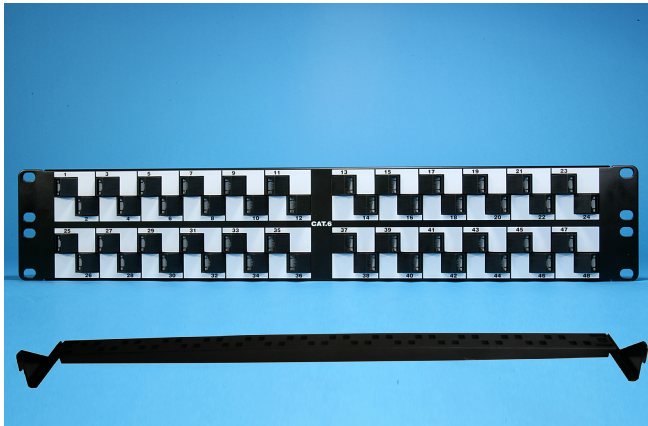
2012PA6-MH24A

CAT 6 24 port angled patch panel, 1U

**** 12 port based module, with rear cable management**

Ordering Information

Item(s) / Polybag	Items/Inner box	Items/Outer box
1	1	15
Color	Customized colors available	



2012PA6-MH48A

CAT 6 48 port angled patch panel, 2U

**** 12 port based module, with rear cable management × 2**

Ordering Information

Item(s) / Polybag	Items/Inner box	Items/Outer box
1	1	10
Color	Customized colors available	