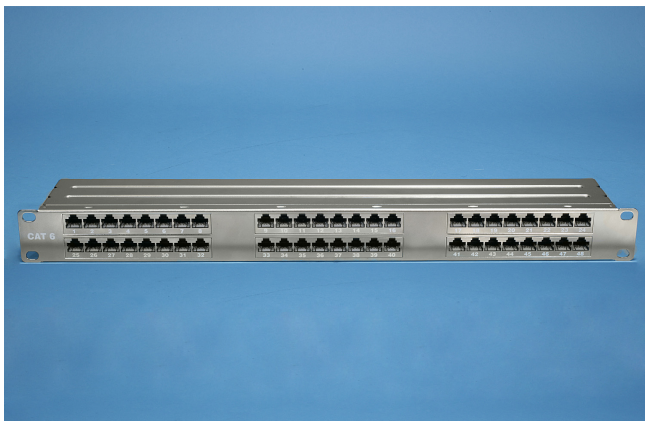
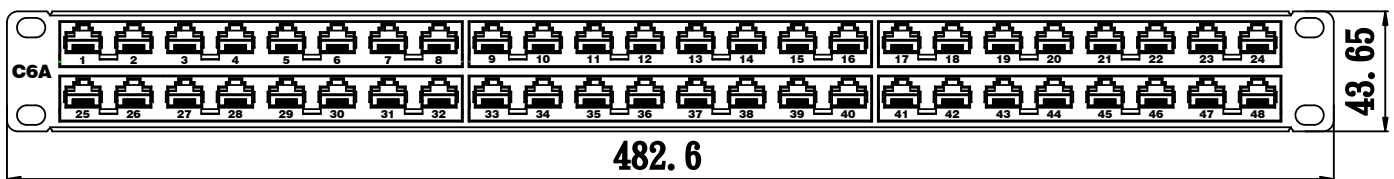


**SURTEC's 2042P-JMAH1F48-06 CAT 6A 48port tray patch panel supports high bandwidth - up to 500MHz - and passes ISO/IEC 11801. It provides twice the density as a conventional 1U patch panel.**

**Feature / Application:**

- 1. UL 1863 safety listed**
- 2. Compatible with CAT 6A component performance (ISO/IEC 11801)**
- 3. Silkscreened port numbers on panel front**
- 4. Panels maximize rack space and reduce costs in high-density applicaitons**
- 5. IDC's easily terminated by 110 or Krone tool**
- 6. UL 94V-0 fire retardant plastic**



<b>2042P-JMAH1F48-06</b>		
CAT 6A FTP 1U 48-port tray patch panel		
**CAT 5e and CAT 6 tray patch panel available		
<b>Ordering Information</b>		
Item(s) / Polybag	Items/Inner box	Items/Outer box
1	1	5
Color	Galvanized steel	