

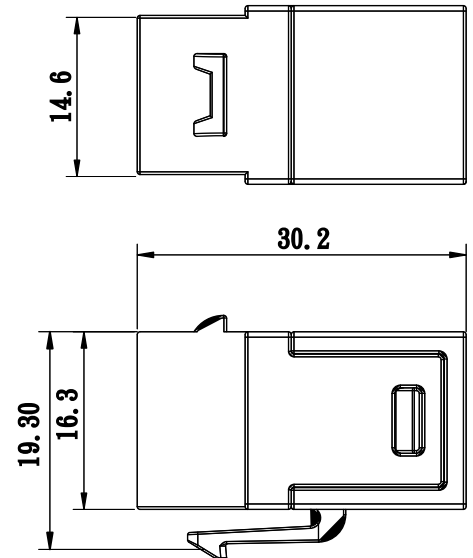
SURTEC's 1026KS-M5 CAT 5e FTP 180° female to female inline coupler is great for extending, shortening or repairing a channel in field. It supports CAT 5e channel performance. The 1026KS-M5 provides flexibility to your CAT 5e FTP channel installation.

Feature :

1. CAT 5e FTP 180° female to female inline coupler
2. Passes CAT 5e channel performance (ANSI/TIA-568.2-D)
3. UL 1863 safety listed
4. For consolidation points and cross-connections
5. 360° shielded housing

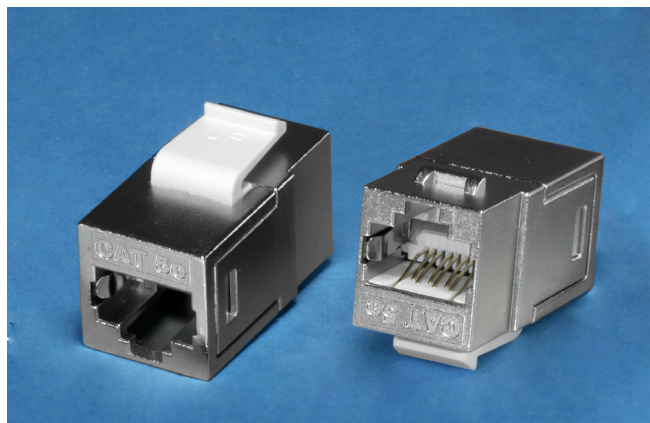
Application :

1. For Ethernet CAT 5e FTP Solutions
2. Compatible with SURTEC FTP patch panel and FTP faceplate



ANSI/TIA-568.2-D Channel Performance Requirements

CAT 5e	Bandwidth	NEXT	ELFEXT	Attenuation	Return Loss
1026KS-M5	(dB) at 100MHZ	>43	>35.1	<0.40	>20



1026KS-M5

CAT 5e FTP inline coupler

**CAT 6 & CAT 6A jack available

Ordering Information

Item(s) / Polybag	Items/Inner box	Items/Outer box
1	100	800
Color	Zinc-alloy	