

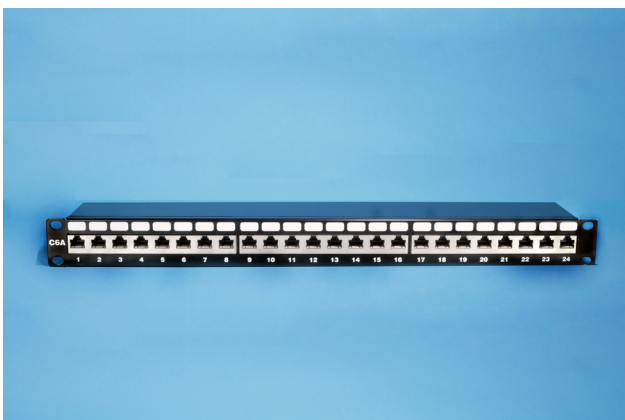
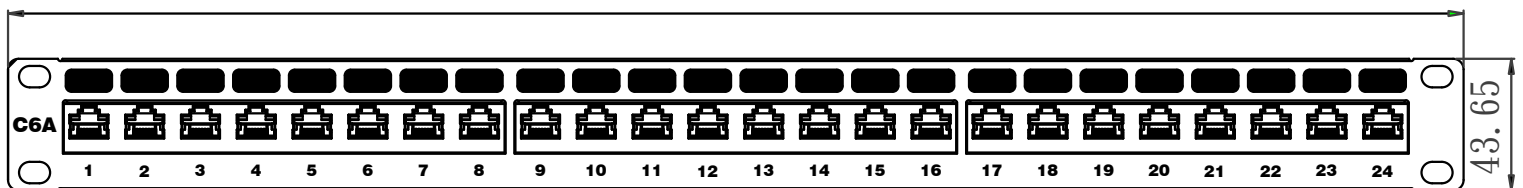
SURTEC 2042P-GMAH1F24 FTP CAT 6A tray type patch panel has standard surpassing transmission performance. It designed to be quick and easy to install and termination.

Features / Applications:

- 1. Compatible with CAT 6A component performance (ISO/IEC 11801)**
- 2. 1U 24-port FTP tray patch panel**
- 3. Silkscreened port numbers on panel front for facilitate easy reading**
- 4. UL 1863 safety listed**
- 5. UL 94V-0 flammability standard**



482.6



2042P-GMAH1F24

CAT 6A FTP tray type patch panel

****CAT 6A UTP tray type patch panel available**

Ordering Information

Item(s) / Polybag	Items/Inner box	Items/Outer box
1	1	10
Color	Customized colors available	