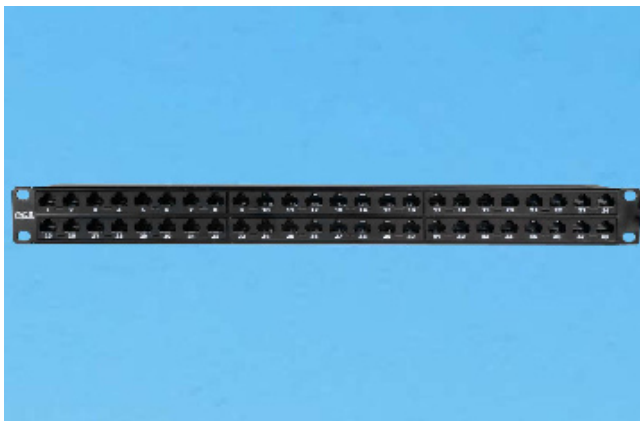
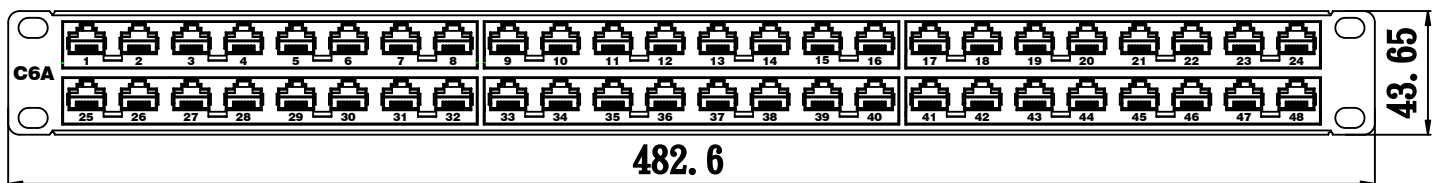


SURTEC's 2042P-JMAH48 CAT 6A 48port tray patch panel supports high bandwidth - up to 5000MHz - and passes ANSI/TIA-568.2-D. It provides twice the density as a conventional 1U patch panel.

Feature / Application:

- 1. UL 1863 safety listed**
- 2. Compatible with CAT 6A component performance (ANSI/TIA-568.2-D)**
- 3. Silkscreened port numbers on panel front**
- 4. Panels maximize rack space and reduce costs in high-density applicaitons**
- 5. IDC's easily terminated by 110 or Krone tool**
- 6. UL 94V-0 fire retardant plastic**



2042P-JMAH48

CAT 6A UTP 1U 48-port tray patch panel

****CAT 5e and CAT 6 tray patch panel available**

Ordering Information

Item(s) / Polybag	Items/Inner box	Items/Outer box
1	1	5
Color	Customized colors available	