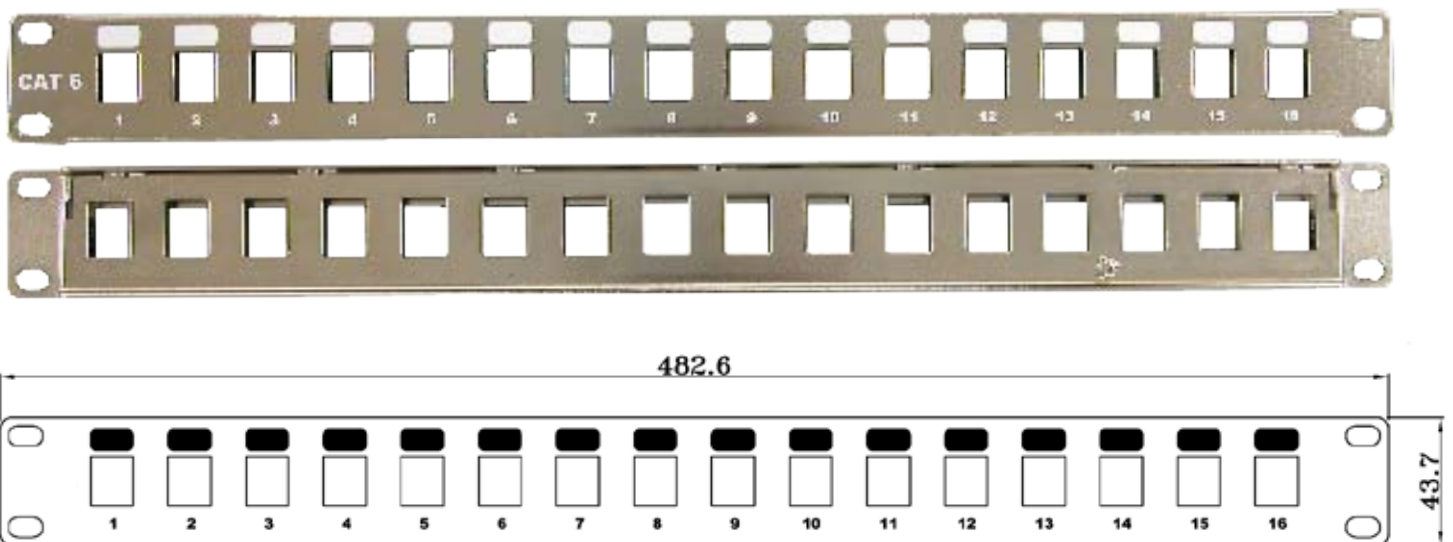


SURTEC Nickel plating type FTP patch panel is designed for all of Surtec FTP connectors and for your complete FTP solution.

Features / Applications:

- 1. FTP snap-in type patch panel**
- 2. Jacks fit flush with the front of the panel surface**
- 3. Printed writeable labels**
- 4. Integrated cable management available (optional)**
- 6. Grounding screw attached on back panel**
- 7. UL 1863 Safety Listed**



2022K-FM16-06-2

FTP 16 port snap-in type patch panel, 1U

****With hanged support bar (NRLD0454)**

Ordering Information

Item(s) / Polybag	Items/Inner box	Items/Outer box
1	1	15
Material	Stainless Steel	



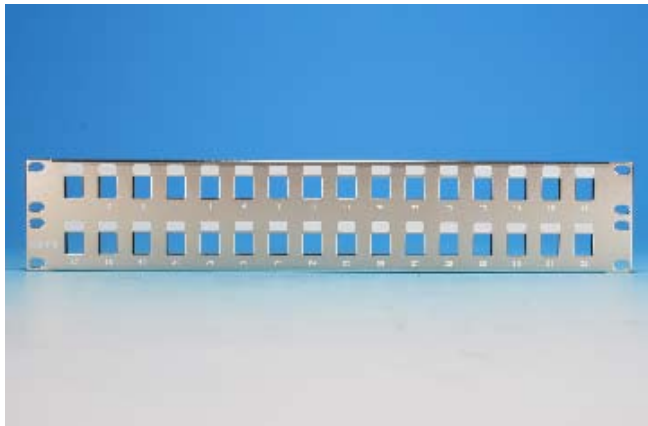
2022K-FM24-06-2

FTP 24 port snap-in type patch panel, 1U

****With hanged support bar (NRLD0454)**

Ordering Information

Item(s) / Polybag	Items/Inner box	Items/Outer box
1	1	15
Material	Stainless Steel	



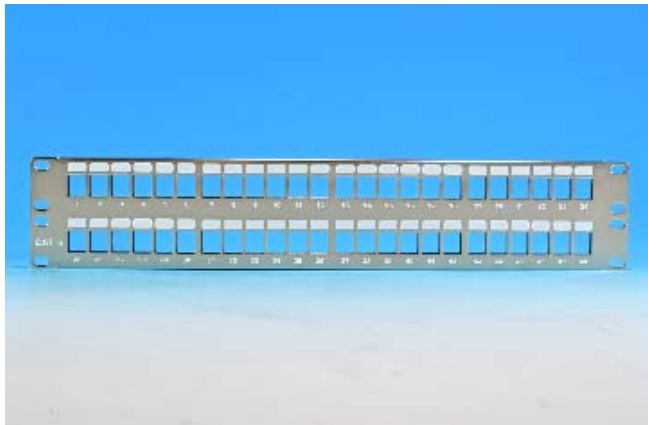
2022K-FM32-06-2

FTP 32 port snap-in type patch panel, 2U

****With hanged support bar (NRLD0454)**

Ordering Information

Item(s) / Polybag	Items/Inner box	Items/Outer box
1	1	10
Material	Stainless Steel	



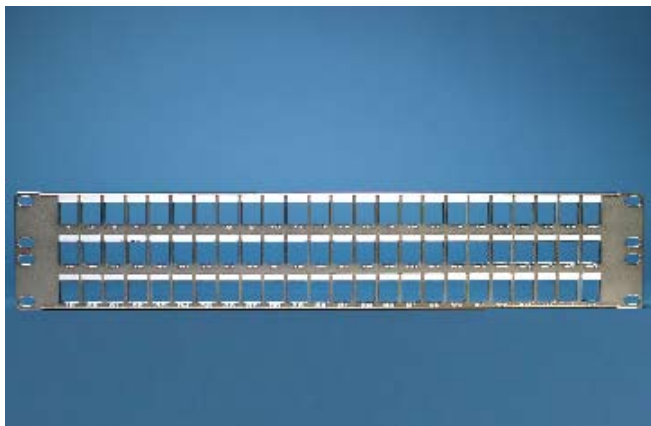
2022K6-FM48-06-2

FTP 48 port snap-in type patch panel, 2U

****With hanged support bar (NRLD0454)**

Ordering Information

Item(s) / Polybag	Items/Inner box	Items/Outer box
1	1	10
Material	Stainless Steel	



2022K-FM72-06-2

FTP 72 port snap-in type patch panel, 2U

****With hanged support bar (NRLD0454)**

Ordering Information

Item(s) / Polybag	Items/Inner box	Items/Outer box
1	1	10
Material	Stainless Steel	



2022K-FM24G-06

FTP 24 port snap-in type patch panel, 1U

****With short version of hinged support bar (LD0978A)**

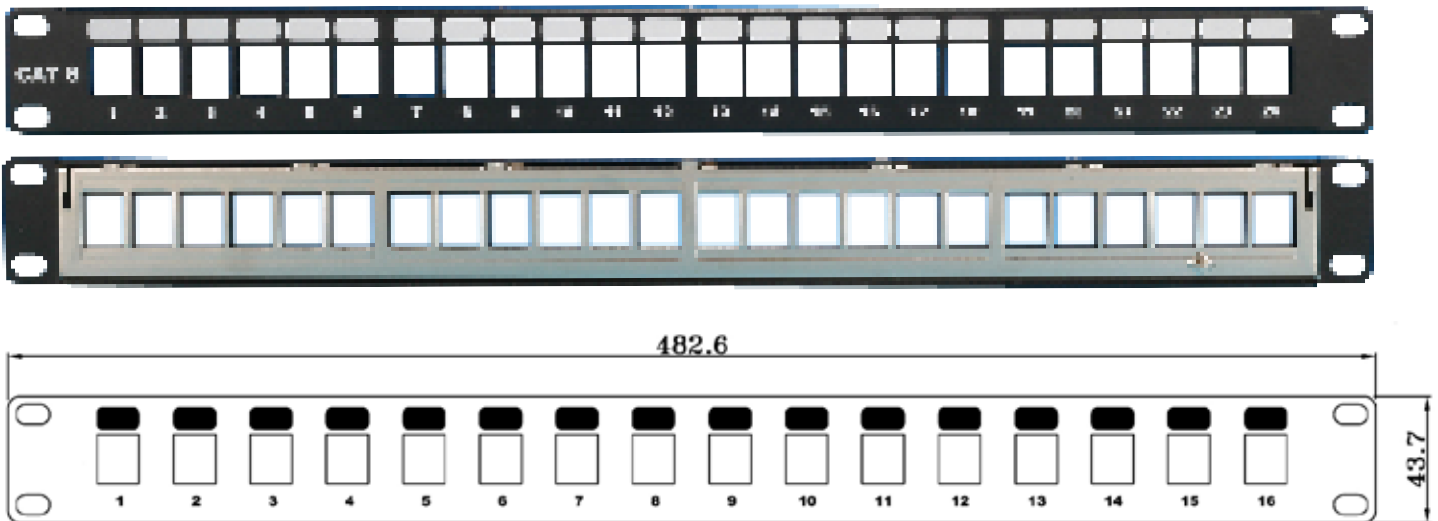
Ordering Information

Item(s) / Polybag	Items/Inner box	Items/Outer box
1	1	15
Material	Stainless Steel	

SURTEC snap-in type FTP patch panel is designed for customized connectors, you can snap your preferred SURTEC keystone jacks Snap-in and make your own style patch panel.

Features / Applications:

- 1. FTP, snap-in type**
- 2. Jacks fit flush with the front of the panel surface**
- 3. Customized colors available**
- 4. Printed writeable labels**
- 5. Integraed cable management available (optional)**
- 6. Grounding screw attached on back panel**
- 7. UL 1863 Safety Listed**



2022K-FM16

FTP 16 port snap-in type patch panel, 1U

2022K-FM16-1 print "CAT 5e" / 2022K-FM16-2 print "CAT 6"

Ordering Information

Item(s) / Polybag	Items/Inner box	Items/Outer box
1	1	15
Material	Stainless Steel	



2022K-FM24

FTP 24 port snap-in type patch panel, 1U

2022K-FM24-1 print "CAT 5e" / 2022K-FM24-2 print "CAT 6"

Ordering Information

Item(s) / Polybag	Items/Inner box	Items/Outer box
1	1	10
Material	Stainless Steel	



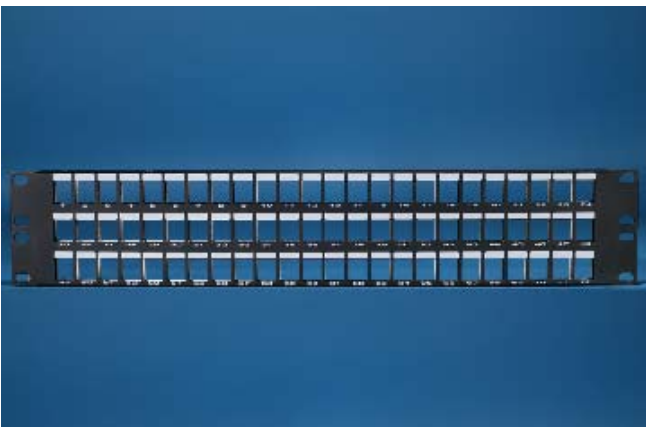
2022K-FM48

FTP 48 port snap-in type patch panel, 2U

2022K-FM48-1 print "CAT 5e" / 2022K-FM48-2 print "CAT 6"

Ordering Information

Item(s) / Polybag	Items/Inner box	Items/Outer box
1	1	10
Material	Stainless Steel	



2022K-FM72

FTP 72 port snap-in type patch panel, 2U

2022K-FM72-1 print "CAT 5e" / 2022K-FM72-2 print "CAT 6"

Ordering Information

Item(s) / Polybag	Items/Inner box	Items/Outer box
1	1	10
Material	Stainless Steel	