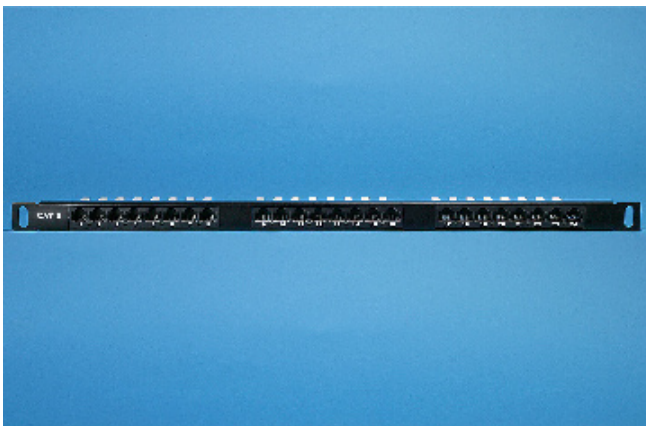
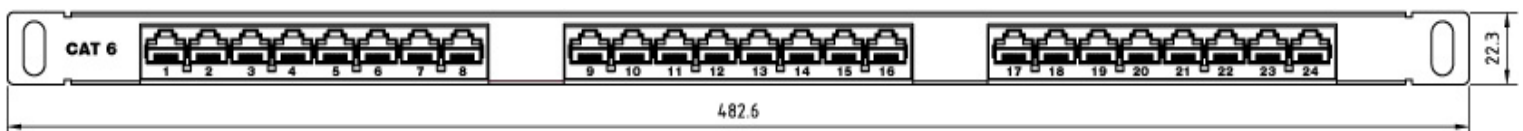
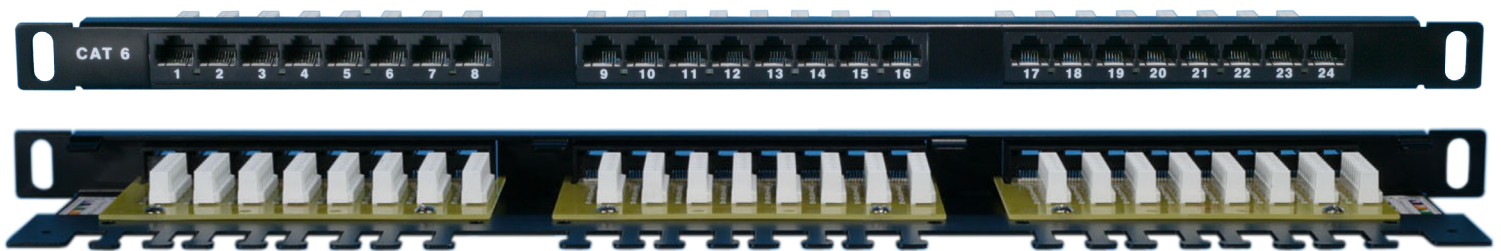


SURTEC's CAT 6 UTP tray type patch panel supports bandwidth up to and beyond 250MHz and passes ANSI/TIA-568.2-D CAT 6 performance standard. The slim half-U design enables the applications in high density database solutions.

Features / Applications:

- 1. Half-U Tray type patch panel**
- 2. UL 1863 Safety Listed**
- 3. Printed labels for port identification**
- 4. For UTP high density database solutions.**



2042P-HMH24

CAT 6 UTP 0.5U 24-port tray type patch panel

****CAT 6 FTP available**

Ordering Information

Item(s) / Polybag	Items/Inner box	Items/Outer box
1	1	14
Color	Customized colors available	