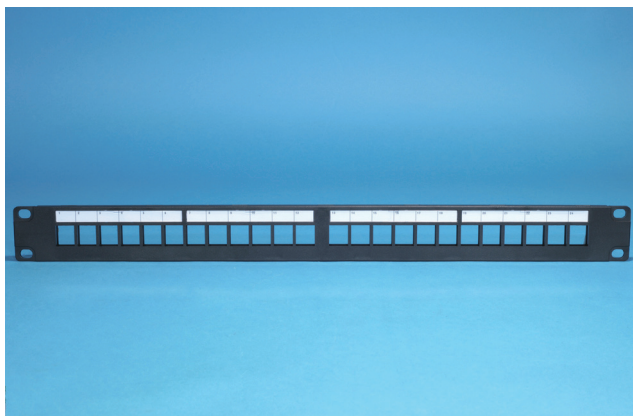
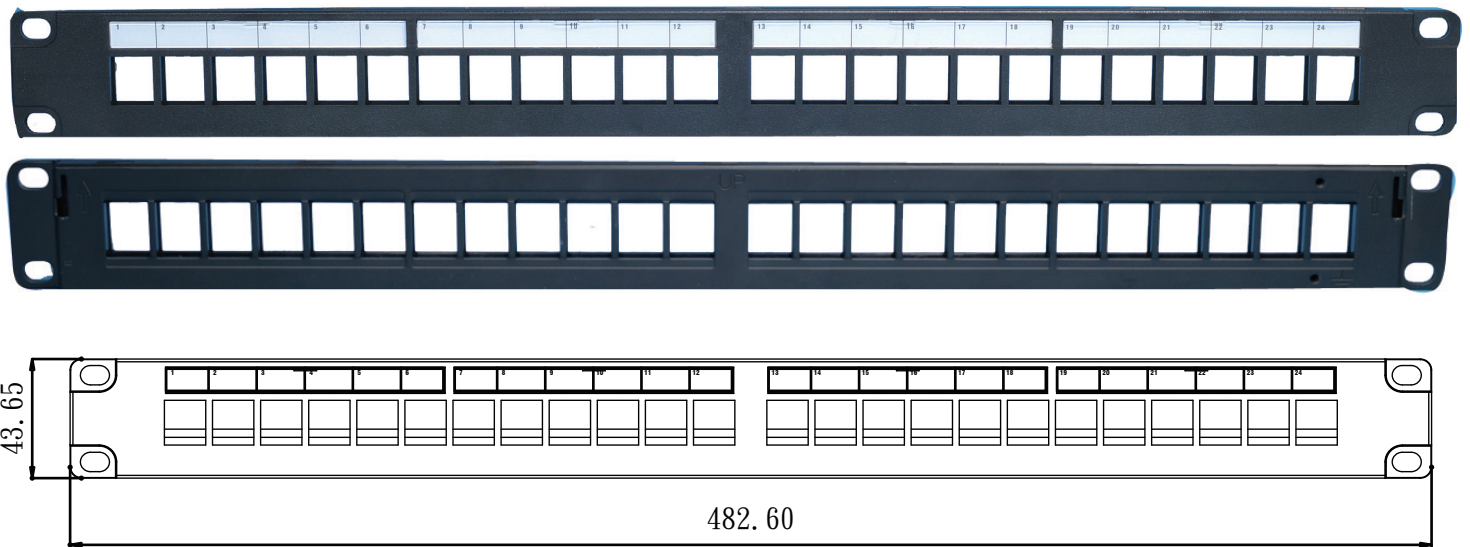


SURTEC 2012K-FPM24 UTP 1U 24-port snap-in patch panel is designed for your customized cabling solution. Based on your requirements, you can select your preferred keystone connectors and snap them into the panel as required.

Feature / Application:

- 1. Compatible with SURTEC keystone jacks and mulitmedia connectors**
- 2. For standard EIA 19" racks**
- 3. Hinged style windows**
- 4. Rear metal black coating**
- 5. UL 1863 Safety listed**
- 6. UL 94V-0 flammability standard**
- 7. Available in UTP and FTP**



2012K-FPM24		
UTP 1U 24-port snap-in patch panel		
**FTP patch panel available		
Ordering Information		
Item(s) / Polybag	Items/Inner box	Items/Outer box
1	1	15
Color	Customized colors available	